



## Repair, Rebuild, and Migrate Windows Domains and Servers

### Capture Periodic Snapshots of System Settings into Text Files for Diagnosis and Repair

#### KEY FEATURES

##### DATA CAPTURE

Capture all system settings periodically into ASCII text files.

##### SYSTEM REPAIR

Repair, redesign, and document servers or domains destroyed by corruption, user error, or malicious actions.

##### DATA RESTORE

Restore user accounts, groups, and shares that were damaged or deleted.

##### DOMAIN REBUILDS

Reconfigure domains that were corrupted or need to be rebuilt according to standards.

##### ACCOUNT REMAPS

Remap accounts for the movement of shares to different domains.

##### NAS MIGRATION

Migrate between Network Attached Storage (NAS) and Windows NT/2000/Server 2003.

##### DOMAIN CONSOLIDATION

Consolidate multiple domains to merge servers and account databases.

##### ACCOUNTS ANALYSIS

Analyze the consistency of accounts and force all accounts to use the same policies.

##### ACL TRANSPORT

Transport Access Control Lists (ACL) between servers, even on different domains.

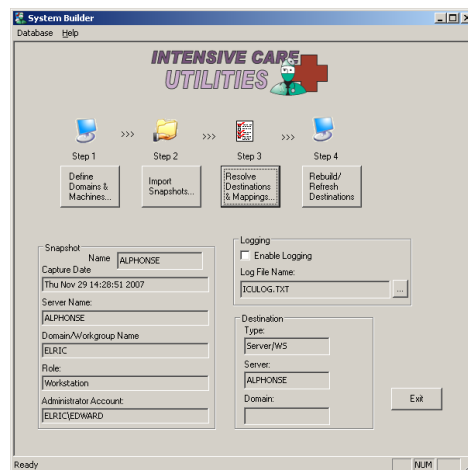
##### PERMISSIONS REBUILDS

Rebuild permissions on shares, even if users and groups have been deleted.

When Windows servers crash, administrators must consider a variety of potential culprits, including system corruption, user error, and malicious destruction. Often, these administrators resort to manually rebuilding machines and restoring system settings, a time-consuming procedure that causes lengthy periods of downtime on business-critical systems, interrupted end-user productivity, and wasted technician time.

#### INTENSIVE CARE UTILITIES

Intensive Care Utilities protects Windows domains and servers by automatically capturing system settings into easily readable ASCII text files. IT staff can use this data to minimize downtime and data loss by quickly diagnosing and surgically repairing the precise cause of a system malfunction. Intensive Care Utilities also simplifies remapping accounts for moving shares to different domains, consolidating multiple domains, and complex migrations between Windows and Network Attached Storage. Intensive Care Utilities relies on simple text files and a GUI interface, making the regeneration of users, groups, passwords, shares, home directories, and Access Control Lists an effortless endeavor.



Recreate deleted users, restore damaged ACLs, rebuild domains, and conduct migrations.

Intensive Care Utilities consists of two components: the Capture Generator and the System Builder. The Capture Generator takes the snapshots of domain controllers and servers, and stores the data in text files. The System Builder contains the editing and remapping capabilities for recreating deleted users, restoring damaged ACLs, rebuilding domains from scratch, and conducting migrations.

